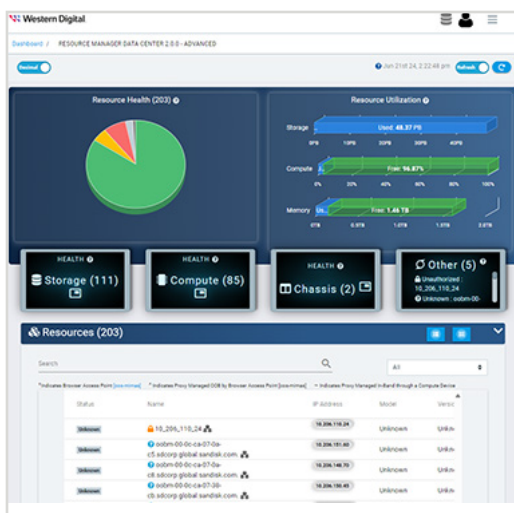




# Western Digital

## Product Brief



## Features

- Data Analytics and Reporting
- Network Operation Center (NOC) View
- Multi-Node Management
- File Based Zoning
- Telemetry
- Centralized Remote Management
- Persistent Storage of Discovered Resources
- Inventory Management
- Policy Engine
- Group Management
- Notification Services
- Authentication Services
- Ansible Modules for Bulk Operations and Orchestration
- Ansible Playbook Templates for End-to-End Orchestration

## Resource Manager

### Data Center Edition

Resource Manager Data Center Edition is a comprehensive, in-band and out-of-band monitoring and management application designed for Western Digital storage platforms. It operates on a central management server, discovering health and utilization data for all compatible devices on a network, and presenting device information and management capabilities to a browser in a convenient dashboard format.

### Network Dashboard

The network dashboard presents the results of a customizable network scan for all discoverable resources. Configure the scan range and query details, or create groups of resources to administer group operations. Resource health is summarized by health categories and device type, while storage utilization is aggregated into used, available, and total capacity across all devices. Review high-level resource information, or use the login controls to access the dashboard of any discovered resource for detailed device information and management controls.

### Server Dashboard

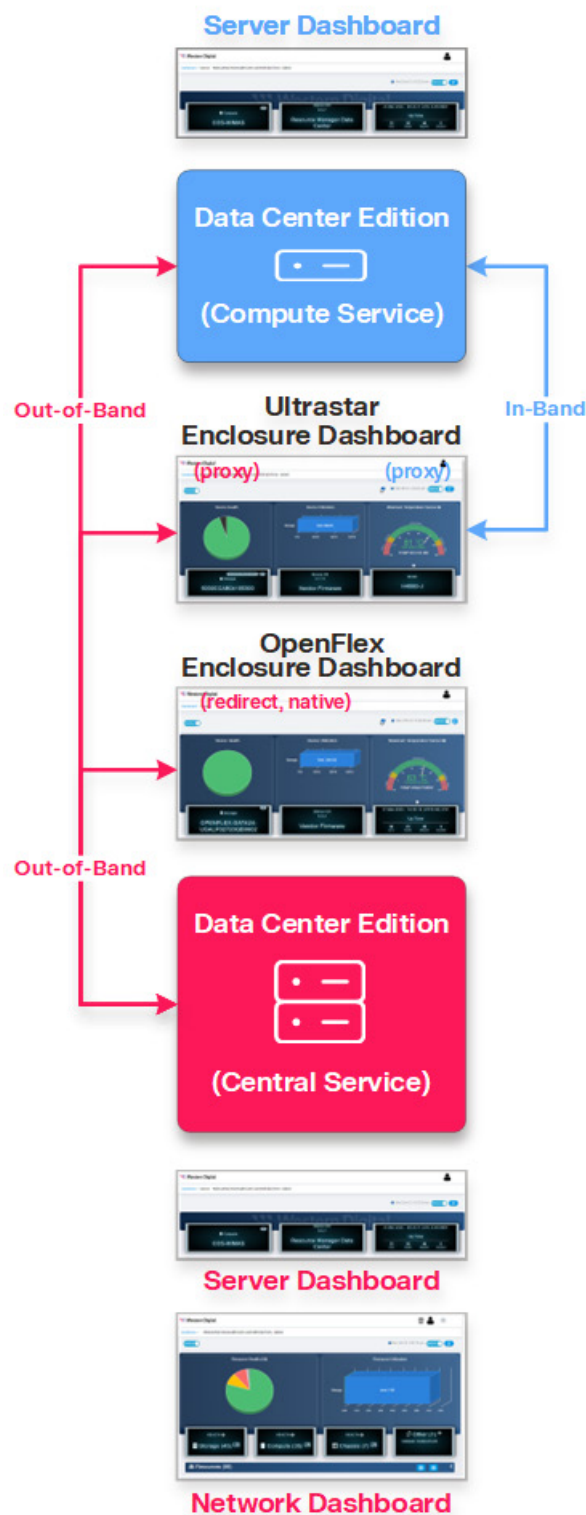
Access the central server dashboard to perform management tasks, such as downloading logs and notices, configuring LDAP/AD settings, uploading an HTTPS certificate, creating user accounts, setting location attributes, and updating Resource Manager Data Center Edition software.

### Enclosure Dashboard<sup>1</sup>

Navigate to the device dashboard of an OpenFlex® or Ultrastar® enclosure to access a utilization summary of installed devices and obtain a high level health status of components. Explore separate tabs to gather detailed information about IOMs, PSUs, fans, ports, expanders, sensors, cables, and drives. Execute administrative tasks such as uploading an HTTPS certificate, creating user accounts, downloading logs and messages, and enabling enclosure and drive identification LEDs. Configure location attributes, port settings, and enable drive zoning. Remotely update enclosure firmware or reboot the enclosure, IOMs, and drives.

<sup>1</sup> OpenFlex and Ultrastar platforms provide different management capabilities. Please refer to the Resource Manager Data Center Edition *User Guide* for more information about platform-specific management features.

# Resource Manager Data Center Edition



## Supported Platforms

Ultrastar Data60	OpenFlex Data24
Ultrastar Data60-3000	OpenFlex Data24-3200
Ultrastar Data102	OpenFlex Data24-4000
Ultrastar Data102-3000	

## Compatible Operating Systems

CentOS	Version 8.5
Red Hat® Enterprise Linux®	Versions 8.8, 9.2
Ubuntu	Versions 18.04, 20.04, 22.04, 24.04
Debian	Versions 10.9, 10.13, 11, 11.2
Windows Server	Versions 2019, 2022

## Compatible Browsers

Google Chrome	Version 113.0.5672.93 and later
Mozilla Firefox	Version 102.11.0esr and later
Microsoft Edge	Version 113.0.1774.42 and later

## Third-Party Software<sup>2</sup>

Installation Type	Linux®	Windows
Basic	N/A	N/A
Advanced & Docker	Elasticsearch (8.5.3) Ansible-Core (2.13.7) Ansible® (6.7.0) Python (3.8)	Elasticsearch (8.5.3)

## Download Instructions

1. Log in to your support account and select the **Downloads** option.
2. Under the **Select Product** section, choose **Resource Manager**.
3. Within the **Select an option** menu, select your operating system and the current version of Resource Manager Data Center Edition.
4. Click on **Software** to view the available software file, and then select the filename to download the file.
5. Unzip or extract the compressed file to the desired directory on the host server.

For detailed installation and usage instructions, refer to the [Resource Manager Data Center Edition User Guide](#).

For software release notes, refer to the [Resource Manager Data Center Edition Release Notes](#).



<sup>2</sup> For Linux installations, required third-party software may be installed automatically online. For Windows and Docker installations, required third-party software is bundled with Resource Manager Data Center Edition.

© 2025 Western Digital Corporation or its affiliates. All rights reserved. Western Digital, the Western Digital design, the Western Digital logo, OpenFlex, and Ultrastar are registered trademarks or trademarks of Western Digital Corporation or its affiliates in the US and/or other countries. Ansible, CentOS, and Red Hat Enterprise Linux are trademarks or registered trademarks of Red Hat, Inc. or its subsidiaries in the United States and other countries. Ubuntu is a registered trademark of Canonical Ltd. Debian is a trademark owned by Software in the Public Interest, Inc. Microsoft Edge and Windows Server are either registered trademarks or trademarks of Microsoft Corporation in the United States and/or other countries. Chrome is a trademark of Google LLC. Firefox is a trademark of the Mozilla Foundation in the U.S. and other countries. Elasticsearch is a trademark of Elasticsearch BV, registered in the U.S. and in other countries. Linux is the registered trademark of Linus Torvalds in the U.S. and other countries. "Python" is a trademark or registered trademark of the Python Software Foundation. All other marks are the property of their respective owners. References in this publication to Western Digital products, programs, or services do not imply that they will be made available in all countries. Product specifications provided are sample specifications and do not constitute a warranty. Actual specifications for unique part numbers may vary. Pictures shown may vary from actual products.