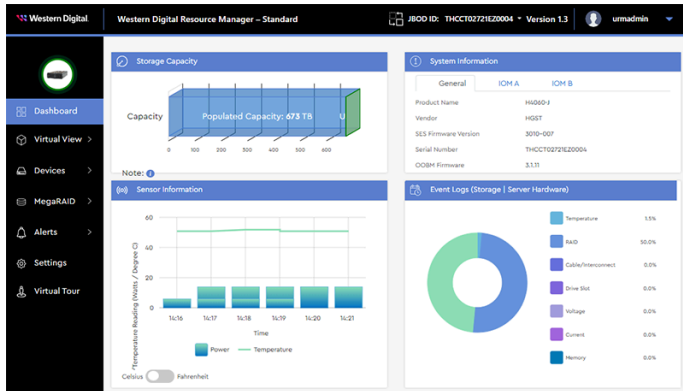


Overview

Resource Manager Standard Edition is an in-band monitoring and management application for Western Digital storage platforms. It runs on the host operating system (Windows® or Linux®), using a RESTful interface to present a real-time status of the platform's storage health and management controls to the browser in the form of an intuitive GUI.



Feature Highlights

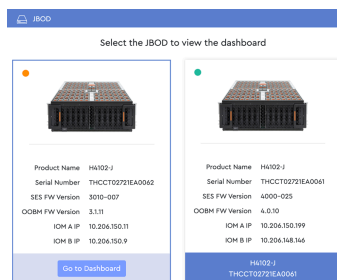
- Multiple JBOD & RAID configuration support
- Multiple RAID & HBA controller support¹
- Drive monitoring, LED management, firmware update
- Zoning configuration: predefined, custom, import/export
- Email alerts, downloadable events & logs

Dashboard

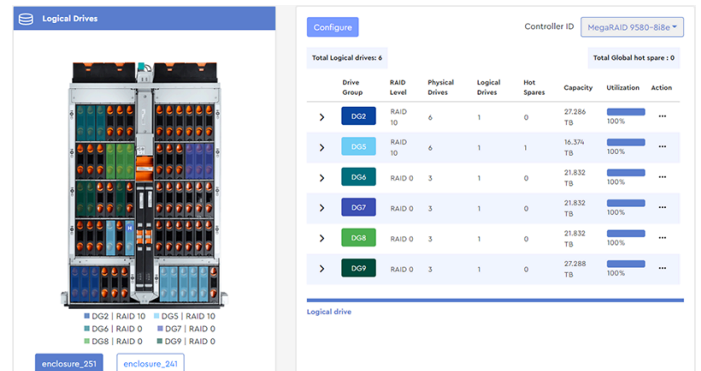
View a consolidated monitoring page displaying the most critical platform data, such as populated/unpopulated storage capacity, system information (serial number, SEP & OOBH FW versions), IOM information (MAC & IP addresses), and the last 10 minutes of sensor readings (refreshed approximately every 60 seconds). Events are displayed in a categorized pie chart as well as a chronological list, filterable by severity.

Multiple JBODs

Manage up to four enclosures of the same type in a daisy-chain configuration.²

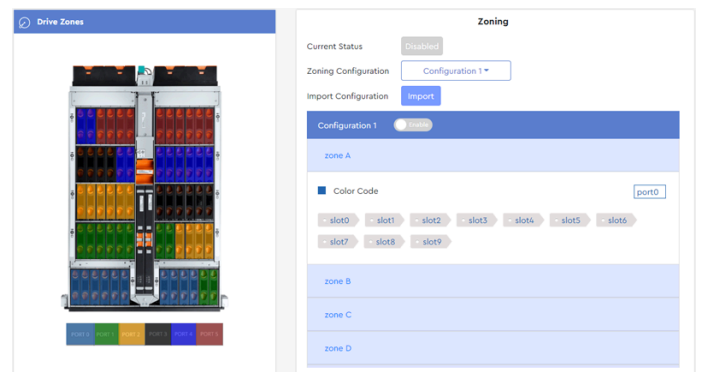


MegaRAID



Select any MegaRAID controller detected in the host, toggle from JBOD to RAID mode, view settings and information, and upgrade controller firmware. Group drives and hot spares from multiple enclosures, assign a RAID level, and allocate capacity to logical drives. Logical drive actions include background/foreground initialization, consistency check, reconstruction, and erase. Advanced RAID actions include patrol read, rebuild, and copyback. View a consolidated listing of RAID information for each configured drive group and detailed information for associated drives. Upgrade firmware for individual drives or an entire group based on model number.

Devices



See the health of all drives at-a-glance, or select a specific drive to view its information, sensor data, and performance statistics. View the connection status of IOM ports and details of connected cables. Select a predefined zoning configuration, group specific drives to create your own, and import or export custom configurations. Upgrade IOM firmware, reset the enclosure and/or IOMs, and configure OOBH details. Download SES PHY error counters for debugging. Check the status, readings, and thresholds of all sensors in the enclosure.

¹ Only supported Broadcom® MegaRAID® & HBA controllers or Adaptec® HBAs. See your platform's *Compatibility Matrix* for details.

² A maximum of 240 drives from 4 Ultrastar® Data60s or 2 Ultrastar Data102s. For 3- and 4-enclosure configurations, see your platform's *User Guide* for daisy-chaining instructions.

Download Instructions

Visit the Western Digital Business Support Center at <https://portal.wdc.com/s/> to download the Resource Manager Standard Edition:

1. Log in to your support account and choose the **Downloads** option.
2. Under **Select Product**, choose **Resource Manager**.
3. Under **Select an option**, choose your operating system and the current version of Resource Manager Standard Edition.
4. Select **Software Binaries** to view a list of available software files for supported platforms. Then click the filename to download the desired software binary.
5. Unzip/extract the archive file to the desired directory on the host server.

For detailed installation and use instructions, refer to the Resource Manager Standard Edition *User Guide*.

For software release notes, refer to the Resource Manager Standard Edition *Release Notes*.

Compatible Operating Systems

Operating System	Version
Red Hat® Enterprise Linux® (RHEL)	7.6, 7.9, 8.0, 8.2, 8.3
CentOS	7.6, 7.9, 8.0, 8.2, 8.3
Ubuntu	16.04, 18.04, 20.04
Debian	10.9
Oracle® Linux	8.2
Windows Server®	2016, 2019

Compatible Browsers

Browser	Version
Chrome	83.0.4103.97 or newer
Firefox	68.9.0esr (64-bit) or newer

Supported Platforms

Ultrastar Data102
Ultrastar Data60

Required Firmware

Firmware	Version
SEP	3010-007 or later
OOBM	3.1.11 or later

Required Software

Software	Version	Applicable OSs
Apache HTTP Server™	2.4.46	Linux only
Internet Information Services (IIS)	10	Windows only
URL Rewrite	2.1	Windows only
Microsoft Application Request Routing	3.0	Windows only
Python®	3.8.8	Windows & Linux
Python Modules:		
pip	9.0.1	
Flask	2.2.2	
Flask-Cors	3.0.8	
Flask-RESTful	0.3.9	
pymongo	4.2.0	
requests	2.18.4	Windows & Linux
PyJWT	2.0.1	
json2html	1.3.0	
waitress	2.0.0	
Paste	3.5.0	
pyOpenSSL	22.1.0	
Werkzeug	2.2.2	
Python Modules:		
pywin32	300	Windows only
psutil	5.8.0	
MongoDB™	4.4	Windows & Linux
sg_utils	1.42	Windows & Linux